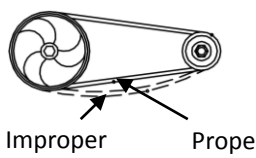
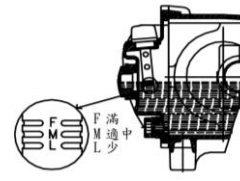
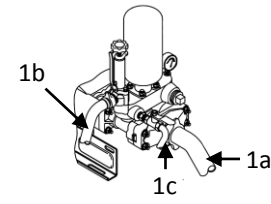


TS-130 Power Sprayer Manual

		
Arrangement	Oil filling & Oil Changing	Way of Operating

1. Arrangement

Adjust the belt and pulley in order to make the belt straightly. The V-belt must not be set loosely as to slip away or drop out of its position.

2. Oil Filling & Oil Changing

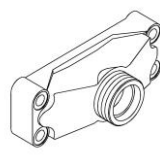
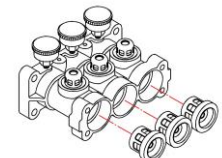


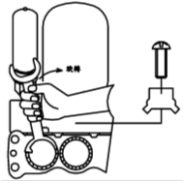
Fill #30 or #40 Oil through the oil hole. Keep the oil level just half of the oil gauge. Change the oil after 50 hours use for the first time and every 100 hours since then. The proper time for changing oil is after operating and the machine is still warm. Remove the drain plug and begin draining.

3. Grease Filling

The three grease cups on the cylinder must always be filled with grease. After using for every two hours, wind the grease cups about two circles per time.

4. Spray

- Fix firmly the suction hose (1a), overflow hose (1b) and spraying hose (1c) on the suction metal, over flow body and cock respectively. Make sure they must be set firmly and let no air leak out.
- Operate the power and start the power sprayer.
- Turn off the cock.
- After the power sprayer is normally operating, adjust the pressure screw. Then turn on the cock and begin operating the power sprayer.

				
Suction Metal	Cylinder	Normal Valve	Struck Valve	Cylinder Leaking

5. Trouble Shooting

a. Feeding failure & pressure instability:

- Check whether the suction hose is any leaking of air. Tight it up.
- Check whether the strainer is stuck. Clean it up, if necessary.
- Turn on the cock for a little while to let out the air left in the feeder and then turn it off.
- Check whether the suction metal, cylinder and six valves are stuck. Clean it up, if necessary.
- Check the flat valve and valve seat to see whether they are damaged.
- Check whether the valve springs are damaged.

b. Cylinder Leaking:

- Take the stopper away from the cylinder with screw driver.
- Remove the plunger cover and wind by the three grands on the cylinder (for 1/3 round ~ 1/2 round). If leaking is still uncontrollable, change the V-packing in the cylinder.

c. Pressure Falling:

- Check whether the V-belt is loose.
- Check whether the spraying hose and coupling packing of spraying hose are broken. Renew the parts if necessary.

6. Maintenance

- Operate the power sprayer with clean water for about 5 minutes after use in order to clean the pesticide left in the machine.
- Remove the suction hose, over flow hose, and spraying hose. Then wipe every part of the machine dry.
- Check the oil in the crank case. Refill oil, if necessary.
- Check whether every screw is set firmly.
- Check whether there is any leak of oil.

7. Caution

- During operation, please don't reach out your hands into space of revolving belt wheel to prevent you from being harmed.
- Please check if there is enough oil before operating machine.
- Please check if gasoline, diesel oil or cooling water are enough before operating machine.
- Please check if contact of electric source and insulation are under good condition before operating machine.
- The spraying machine sprayed by pesticide or chemical liquid is prohibited to be used for pumping water to prevent poison.
- Please renew pressure gauge if it is damaged in order to maintain machine's safety.
- Loosen pressure adjusting screw counterclockwise, after using this machine.

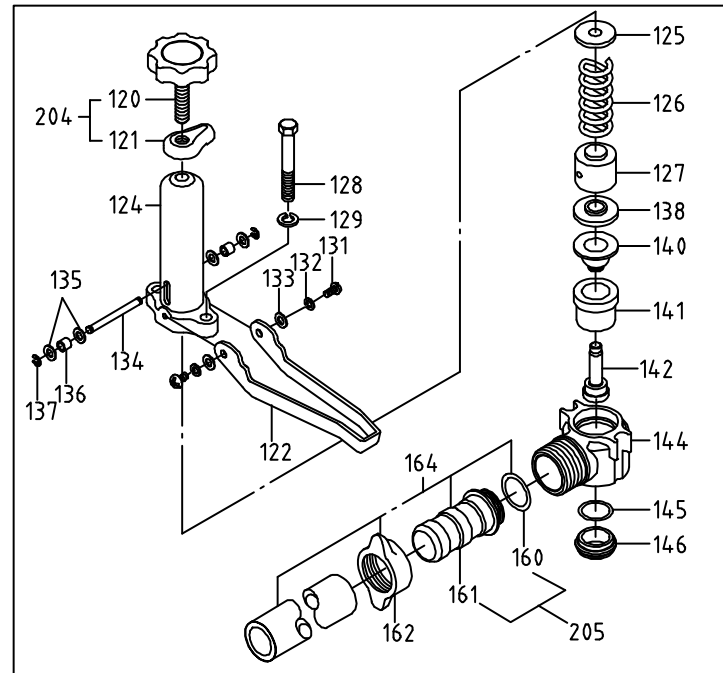
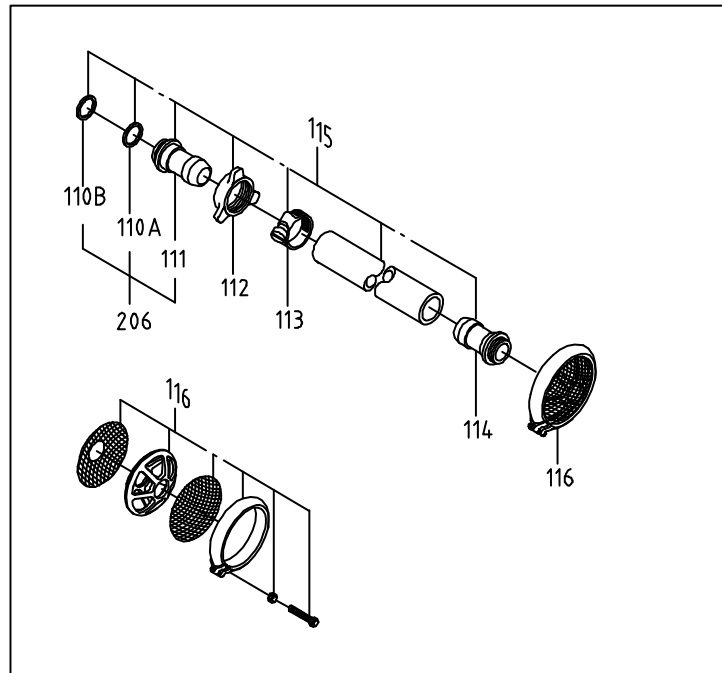
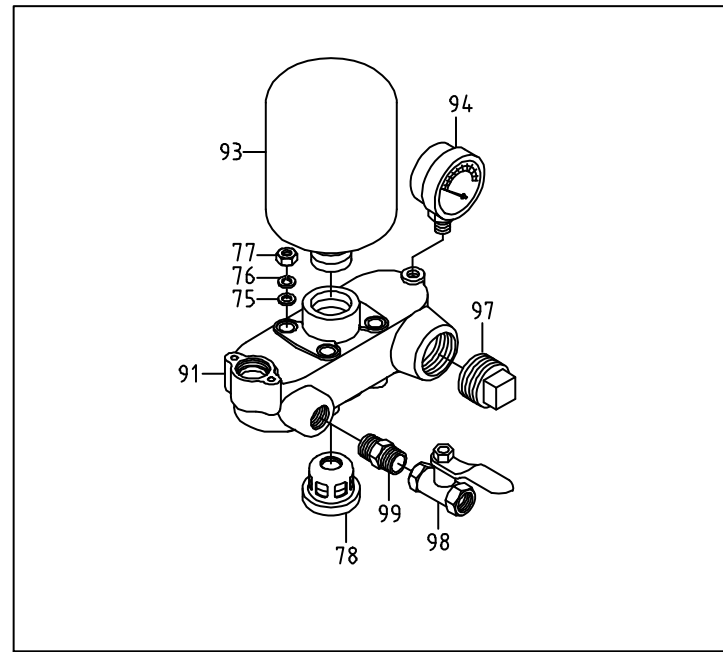
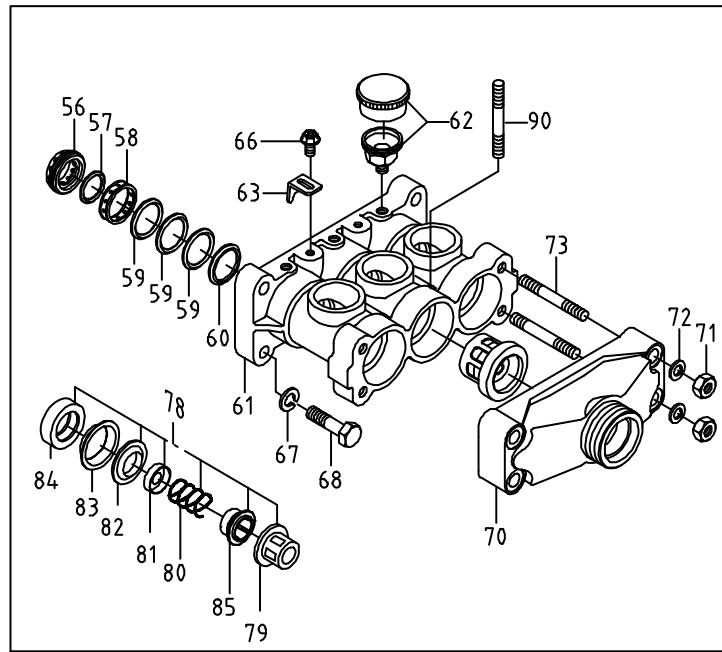
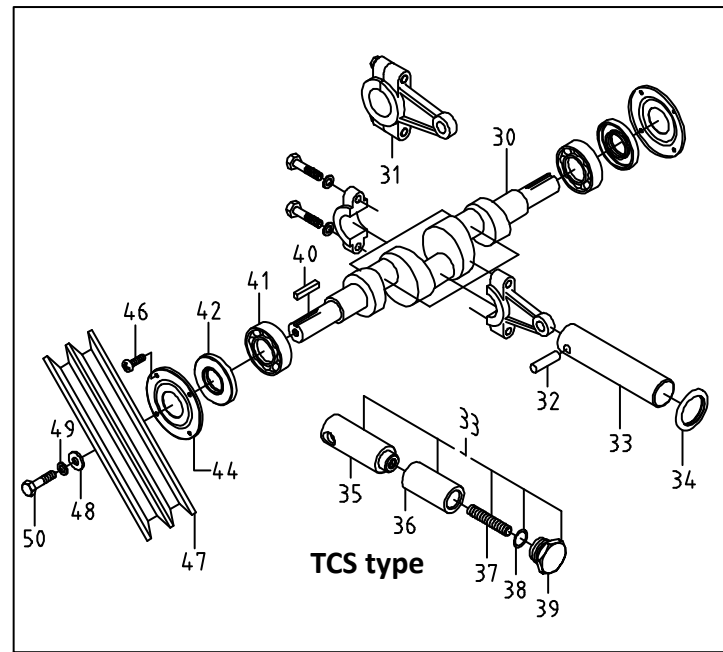
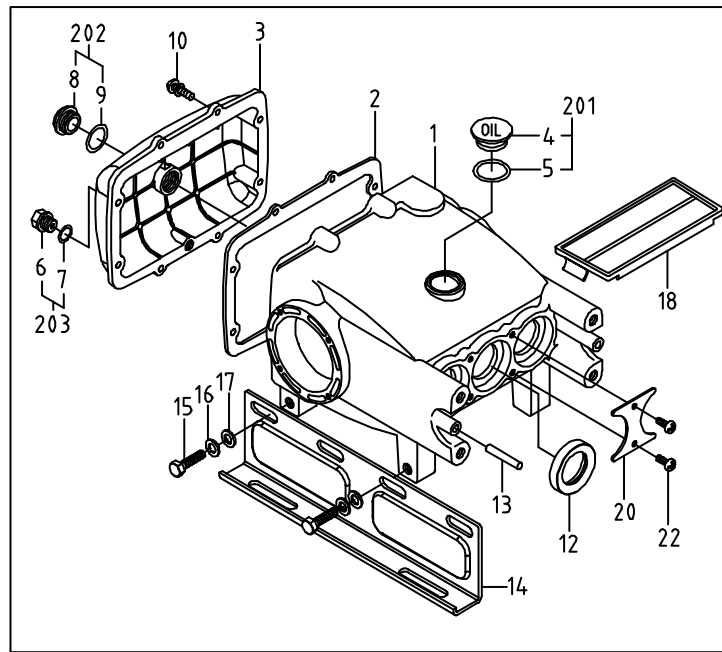
8. Warranty

- Warranty : This warranty involves any failure parts produced or supplied by manufacturer when failure part caused any abnormal performance. During warranty period, the manufacturer offer free maintenance.
 - No service charge and expense of replaced part are required with warranty.
 - Warranty period : one year after delivery.
- The manufacturer is not responsible for damage provokes in case of:
 - A serious lack of foreseen maintenance.
 - Damages caused by the nature disaster such as earthquake.
 - Modifications or intervention that are not authorized by the manufacturer.
 - Non-normative uses that contrary to the specific.
 - The use of non-original spare parts and assigned oil for the pump.
 - Natural aging situation such as rust on surface caused by time.
 - Not inquire to factory or your local distributor when damage occurs.
 - The performance is still good base on power sprayer's registered spec. even some noise or vibration show up.
 - Using the pump without following the instructions of this manual.
- The manufacturer is not responsible for expense provoked in case of:
 - Losing of failure parts during warranty application.
 - Any direct and/or indirect lose comes from warranty items.
 - Regarding to warranty, all seals, packing, O-rings and oil are excluded.



TANONG PRECISION TECHNOLOGY CO., LTD.

No.6, Fengming Rd., Daya Dist., Taichung City
428, Taiwan (R.O.C.)
Tel : +886-4-25662106
Fax: +886-4-25662109
web:www.tanong.com.tw
E-mail: info@tanong.com.tw



Pos.	Parts No.	Parts Name	Q'ty	Specification
1	010-1500-240	Crank case	1	
2	013-1300-000	Gasket, crank case	1	
3	011-1250-240	Cover, crank Case	1	
10	142-0600-003	Screw	8	6x15+S
12	130-1300-000	Oil Seal, plunger	3	42x60x12
13	012-1300-000	Pin	2	
14	018-1300-270	Bed, crank case	2	
15	140-1200-001	Bolt	4	12x25
16	144-1200-001	Washer, Spring	4	M12
17	145-0102-001	Washer	4	1/2x26
18	016-1250-260	Plunger Cover	1	
20	019-1300-000	Stop slice, Oil Seal	2	
22	142-0600-001	Screw	4	6x10
30	020-1300-280	Crank Shaft	1	
31	021-1300-241	Connecting Rod	3	
32	023-1300-000	Plunger Pin	3	
33	022-1300-002	Plunger	3	Standard type
	022-3130-000	Plunger, Ceramic	3	TCS type
	022-1300-003	Plunger, Chrome plated	3	Optional
34	027-1300-000	Stopping Ring, Water	3	
35	022-3130-001	Plunger Head	3	
36	022-3130-003	Ceramic Bush	3	
37	022-3130-002	Bolt	3	M10x88
38	120-2431-000	O-Ring	3	24.4x3.1
39	022-3130-004	Plunger Cap	3	
40	025-1300-000	Key	1	7x7x25
41	024-1300-001	Bearing	2	
42	131-1300-000	Oil Seal, Crank Shaft	2	40x90x8
44	026-1300-001	Cover, Oil Seal	2	
46	142-0600-001	Screw	8	6x10
47	A04-12B2-231	Pulley	1	12B2
48	145-8000-000	Washer	1	
49	144-0308-001	Washer, Spring	1	3/8"
50	140-0308-001	Bolt	1	3/8"x1"
56	044-1300-000	Grand	3	
57	041-1300-000	Grease Packing	3	
58	042-1300-000	Grease Ring	3	
59	043-1300-002/1	V-Packing	9	
60	045-1300-000	V-Packing Seat	3	
61	040-1300-220	Cylinder	1	
62	046-1300-000	Grease Cup	3	
63	047-1300-000	Stopper, Grand	2	
66	140-0600-006	Bolt	2	6x10
67	144-1200-001	Washer, Spring	4	M12
68	140-1200-003	Bolt	4	12x50
70	030-1300-220	Suction Metal	1	
71	146-0102-000	Nut	4	1/2"
72	144-0102-001	Washer, Spring	4	1/2"
73	141-0102-001	Stud Bolt	4	1/2x75
75	145-0102-001	Washer	4	1/2x26
76	144-0102-001	Washer, Spring	4	1/2"
77	146-0102-000	Nut	4	1/2"
78	080-1300-000	Valve Ass'y	6	
79	081-1300-000	Box, Valve	6	
80	086-1300-000	Spring, Valve	6	
81	082-1300-000	Flat, Valve	6	
82	083-1300-000	Seat, Valve	6	
83	084-1300-000	Ring, Valve	6	
84	085-1300-000	Seal, Valve	6	
85	087-1300-000	Stopper, Valve	6	
90	141-0102-002	Stud Bolt	4	1/2x112
91	050-1300-220	Discharge Metal	1	
93	052-1300-250	Air Chamber	1	
94	055-2200-101	Pressure Gauge	1	
97	058-1300-000	Cap	1	
98	051-1300-000	Cock	1	
99	059-1300-000	Union Bolt	1	
110A	126-2000-000	Packing	1	
110B	120-3945-000	O-Ring	1	
111	031-2400-230	Core, coupling	1	2"
112	057-2400-000	Coupling	1	2"
113	034-0241-000	Turn-Buckle	1	2 1/4"
114	032-2400-260	Core, Strainer	1	2"
115	A03-S016-090	Suction Hose	1	1 3/4"x9
116	033-8000-000	Strainer Ass'y	1	
122	074-8000-200	Lever	1	
124	070-8000-000	Spring Box	1	
125	076-8000-000	Upper Metal	1	
126	078-8000-000	Spring	1	
127	077-8000-000	Under Metal	1	
128	143-0800-000	Bolt	2	8x65
129	144-0516-001	Washer, Spring	2	5/16"
131	142-0600-001	Screw	2	6x10
132	144-0104-001	Washer, Spring	2	M6
133	145-0600-001	Washer	2	6x13
134	075-8000-000	Spindle, Roller	1	
135	145-0500-001	Washer	4	5x10x1
136	075-8000-002	Roller	2	
137	075-8000-001	E Washer	2	
138	124-8000-000	Packing	1	
140	062-8000-000	Oil Seal	1	
141	063-8000-000	Box, oil seal	1	
142	933-8000-000	Spindle & Valve, Over Flow	1	
144	060-1300-220	Body Over Flow	1	26.2x3
145	120-2632-000	O-Ring	1	
146	068-1300-250	Valve Seat	1	
160	126-1000-000	Packing	1	1"
161	031-2800-260	Core, coupling	1	1"
162	057-2800-000	Coupling	1	1"
164	A03-O010-085	Over Flow Hose	1	1"x8.5
201	923-2400-001	Oil Cap & O-Ring	1	
202	924-2200-001	Oil Gauge & Gasket	1	
203	925-2200-001	Plug, Fuel Drain&Gasket	1	
204	934-8000-000	Screw & Fly Nut	1	
205	031-2800-002	Core, coupling &Packing	1	1"
206	031-2400-000	Core, coupling &Packing	1	2"
207	930-1300-000	Over Flow Ass'y	1	120~146
208	931-8000-000	Spring Box Ass'y	1	120~137
209	932-1300-000	Body Over Ass'y	1	138~146

Pos.	Parts No.	Parts Name	Q'ty	Specification
81	082-1300-000	Flat, Valve	6	
82	083-1300-000	Seat, Valve	6	
83	084-1300-000	Ring, Valve	6	
84	085-1300-000	Seal, Valve	6	
85	087-1300-000	Stopper, Valve	6	
90	141-0102-002	Stud Bolt	4	1/2x112
91	050-1300-220	Discharge Metal	1	
93	052-1300-250	Air Chamber	1	
94	055-2200-101	Pressure Gauge	1	
97	058-1300-000	Cap	1	
98	051-1300-000	Cock	1	
99	059-1300-000	Union Bolt	1	
110A	126-2000-000	Packing	1	
110B	120-3945-000	O-Ring	1	
111	031-2400-230	Core, coupling	1	2"
112	057-2400-000	Coupling	1	2"
113	034-0241-000	Turn-Buckle	1	2 1/4"
114	032-2400-260	Core, Strainer	1	2"
115	A03-S016-090	Suction Hose	1	1 3/4"x9
116	033-8000-000	Strainer Ass'y	1	
122	074-8000-200	Lever	1	
124	070-8000-000	Spring Box	1	
125	076-8000-000	Upper Metal	1	
126	078-8000-000	Spring	1	
127	077-8000-000	Under Metal	1	
128	143-0800-000	Bolt	2	8x65
129	144-0516-001	Washer, Spring	2	5/16"
131	142-0600-001	Screw	2	6x10
132	144-0104-001	Washer, Spring	2	M6
133	145-0600-001	Washer	2	6x13
134	075-8000-000	Spindle, Roller	1	
135	145-0500-001	Washer	4	5x10x1
136	075-8000-002	Roller	2	
137	075-8000-001	E Washer	2	
138	124-8000-000	Packing	1	
140	062-8000-000	Oil Seal	1	
141	063-8000-000	Box, oil seal	1	
142	933-8000-000	Spindle & Valve, Over Flow	1	
144	060-1300-220	Body Over Flow	1	26.2x3
145	120-2632-000	O-Ring	1	
146	068-1300-250	Valve Seat	1	
160	126-1000-000	Packing	1	1"
161	031-2800-260	Core, coupling	1	1"
162	057-2800-000	Coupling	1	1"
164	A03-O010-085	Over Flow Hose	1	1"x8.5
201	923-2400-001	Oil Cap & O-Ring	1	
202	924-2200-001	Oil Gauge & Gasket	1	
203	925-2200-001	Plug, Fuel Drain&Gasket	1	
204	934-8000-000	Screw & Fly Nut	1	
205	031-2800-002	Core, coupling &Packing	1	1"
206	031-2400-000	Core, coupling &Packing	1	2"
207	930-1300-000	Over Flow Ass'y	1	120~146
208	931-8000-000	Spring Box Ass'y	1	120~137
209	932-1300-000	Body Over Ass'y	1	138~146